



A PROGRAM OF WEST  
YAVAPAI GUIDANCE CLINIC

## In Today's Economy, Why Turn To Us?



Employers who hire people from specific target groups that experience barriers to employment can receive a Work Opportunity Tax

Credit (WOTC).

- WOTC can provide up to \$2,400 in tax relief for each qualifying hire
- Easy application process
- Full-time, part-time and temporary employees make your business eligible for the tax credit
- Employers may claim a tax credit on an unlimited number of qualifying new hires

## What Is Opportunity Knocks?



We are a local employment service assisting people with disabilities in finding work.

Initiated in 1990, **Opportunity Knocks** has successfully placed clients in jobs

ranging from food service and landscaping to computers, and medical services.

Opportunity Knocks helps people and employers connect. It is a program of the nonprofit West Yavapai Guidance Clinic, your local provider of mental health, crisis and addiction services since 1966.

## Opportunity Knocks



A PROGRAM OF WEST  
YAVAPAI GUIDANCE CLINIC

James Sobo  
Vocational Rehabilitation Specialist  
3347 N. Windsong Dr.  
Prescott Valley, AZ 86314

J.Sobo@wygc.org  
928.445.5211, (office)  
928-460-3928 (cell)  
www.wygc.org

*Helping people and  
employers connect*

## Data On Employing Persons With Mental Health Disorders

A study at one large, national firm on health care use and at-work productivity among employees with mental disorders concluded the following:

- ◇ Annual average absenteeism did not differ between those with one or more disorder vs. those without
- ◇ Average at-work productivity performance did not differ either

*Health Affairs, Vol. 19, Num. 4, "DataWatch"*  
*2000 Project HOPE— The People-to-People Health Foundation, Inc.*

West Yavapai Guidance Clinic is contracted through NARBHA, the regional behavioral health authority for Coconino, Navajo, Yavapai, Apache and Mohave counties. Funds for services are provided through a contract with Arizona Department of Health Services/ Division of Behavioral Health Services and AHCCCS.

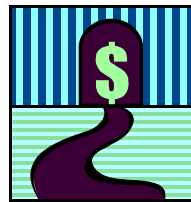
## Employee Testimonial

*"I am a client of a mental health facility and have been working in the Peer Support Program for two and a half years. This has been a great asset to my life in that my self-esteem has improved.*

*I have proven to myself that I can do things I did not know I was capable of. I have learned that I can make available to myself endless opportunities and use these to better myself and others. I enjoy my job, and helping other people also helps me in my personal life because I know that I do have capabilities to live a better life."*

## Who Are Our Clients?

Motivated individuals with disabilities due to a psychiatric disability, learning disability, or physical disability.



*Why not give Jim a call today, to learn more?*

Valuable potential employees who have demonstrated the willingness and ability to work, but who may require support during their training phase.

Capable workers, many of whom have a wide variety of previous job experience and are eager to re-establish themselves in the work force.

## What Services Do We Offer?

- **Job Recruitment:** drawing from pool of clients to cover a range of positions
- **Job Development:** matching worker strengths to employer needs
- **Job Screening:** evaluating clients prior to placement to ensure that they are ready and able to work
- **On-Going Support:** maintaining contact with the client and the employer to ensure the long-term success of the placement
- Potential employees currently motivated and ready to work include, but are not limited to, persons interested in:
  - ◇ Medical office work
  - ◇ Janitorial services
  - ◇ Child and/or adult day care
  - ◇ Administrative support



**A PROGRAM OF WEST YAVAPAI GUIDANCE CLINIC**

James Sobo  
Vocational Rehabilitation Specialist  
3347 N. Windsong Dr.  
Prescott Valley, AZ 86314

J.Sobo@wygc.org  
928.445.5211, (office)  
928-460-3928 (cell)  
www.wygc.org